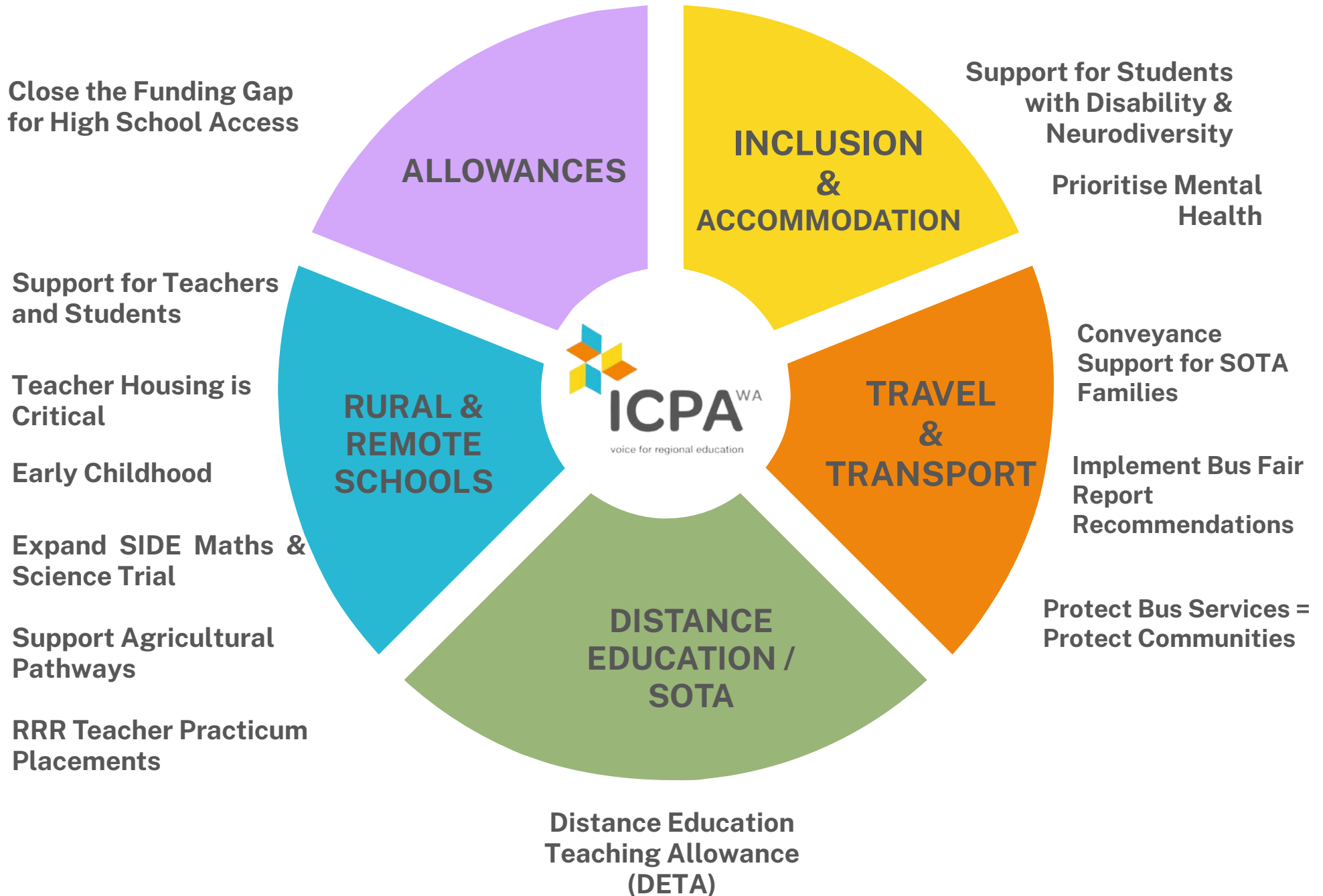




ICPA WA: Policy Priorities 2025



ICPA WA: Policy Priorities 2025

ALLOWANCES

Close the Funding Gap for High School Access

- ▶ Increase BAHA beyond CPI to truly support isolated students.
- ▶ The Boarding Away from Home Allowance (BAHA) + the Access for Isolated Children (AIC) still leaves rural families paying \$3,700+ out-of-pocket for state residential colleges.
- ▶ No metro government residential colleges; Rotary College fees = \$9,000+ gap

DISTANCE EDUCATION / SOTA

Distance Education Teaching Allowance (DETA)

- ▶ Parents (mainly mothers) are unpaid full-time supervisors in SOTA classrooms.
- ▶ Fund supervisors or home tutors to deliver equity in distance learning.
- ▶ Put DETA on the Federal/State agenda for national action.

ICPA WA: Policy Priorities 2025

RURAL & REMOTE SCHOOLS

Support for Teachers and Students
Teacher Housing is Critical
Early Childhood
Expand SIDE Maths & Science Trial
Support Agricultural Pathways
RRR Teacher Practicum Placements

- ▶ Improve access to in-term swimming and VacSwim for all RRR students.
- ▶ Expand Teacher Mobility Trials and revise permanency barriers to attract quality educators.
- ▶ Fund marketing support for small schools to recruit teachers.
- ▶ Ensure modern, local Government Regional Officer Housing (GROH) to prevent 100km+ commutes and hotel stays.
- ▶ Develop and implement early childhood education programs and where appropriate, school occasional childcare. Ensure all geographically isolated early childhood students have access to early years education.
- ▶ Enrich multi-year classrooms with SIDE's curriculum support. Expand trial to more schools and subjects.
- ▶ Increase boarding capacity at agricultural colleges to grow the rural workforce. Offer financial support to attract future teachers into rural practicums.

ICPA WA: Policy Priorities 2025

TRAVEL & TRANSPORT

Conveyance Support for SOTA Families
Protect Bus Services = Protect Communities
Implement Bus Fair Report Recommendations

- ▶ Travel of 100–800km each term for face-to-face learning is costly and inequitable. Provide a dedicated allowance or subsidy.
- ▶ Implement key recommendations, such as #20: engage with School Bus Advisory Committees to prevent regional transport disruptions and disputes.
- ▶ Bus cuts force families out and hurt local economies. Keep even the smallest services running.

INCLUSION & BOARDING

Support for Students with Disability & Neurodiversity
Prioritise Mental Health

- ▶ Residential colleges are turning away students due to lack of support funding. Fund out-of-school-hours care to ensure inclusive boarding access.
- ▶ Fund staff training and additional wellbeing support in residential colleges. Urgently upgrade regional boarding facilities — start with Geraldton.